

Endfield Place

Maidenhead • Berkshire • SL6 4NZ

Guide Price: £1,350,000



coopers
est 1986

Endfield Place

Maidenhead • Berkshire • SL6 4NZ

This impressive family home offers generous accommodation arranged over three floors. The ground floor comprises of a spacious kitchen/breakfast room, complemented by a formal dining room, comfortable sitting room, study, utility room and cloakroom. The first floor features a substantial bedroom with a modern en-suite and dressing room, alongside three further well-proportioned bedrooms, each benefiting from its own en-suite. The top floor boasts an expansive principal bedroom suite complete with a dressing room and en-suite bathroom. Externally, the property offers driveway parking and double garage, while the rear garden provides a private and attractive space ideal for both entertaining and family living. Situated within the highly regarded gated development of Endfield Place in Maidenhead, the property is ideally located for excellent local schools, with Maidenhead town centre, the Elizabeth Line station and key road links including the A404 and M4 all within easy reach.

No Chain

Impressive Five Bedroom Home

Gated Development

Double Garage

Spanning Over Three Floor's

En-Suite To Each Bedroom

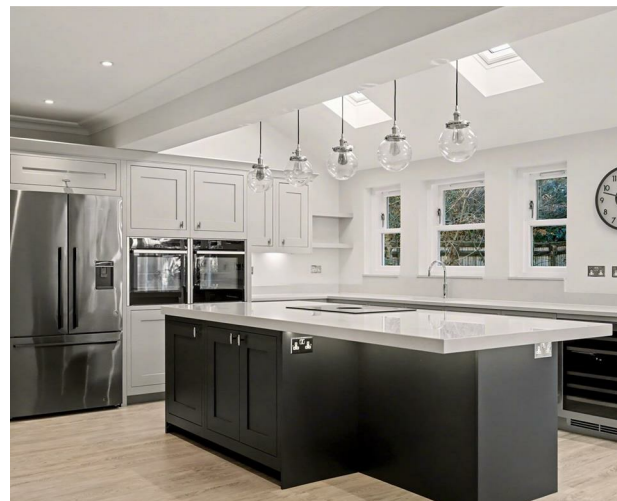
Driveway Parking With EV Charger

Bespoke Kitchen/Diner

Utility Room & Study

Within Catchment Of Outstanding Schools

These particulars are intended as a guide and must not be relied upon as statements of fact. Your attention is drawn to the Important Notice on the last page.

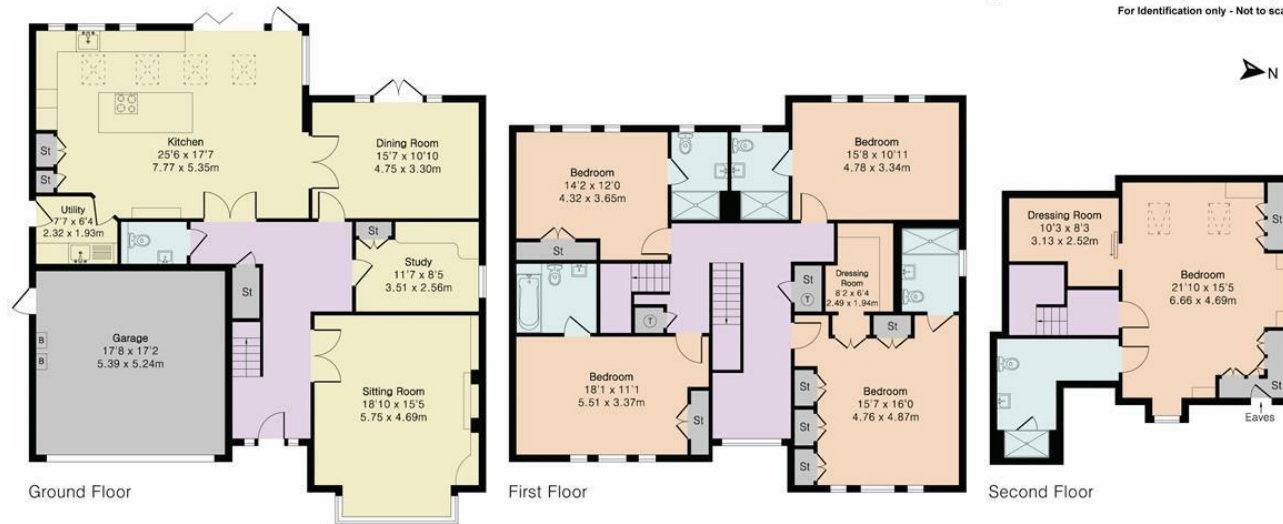




Endfield Place, Maidenhead, SL6

Approximate Area = 3458 sq ft / 321.3 sq m

For Identification only - Not to scale



Floor plan produced in accordance with RICS Property Measurement 2nd Edition. Although Pink Plan Ltd ensures the highest level of accuracy, measurements of doors, windows and rooms are approximate and no responsibility is taken for error, omission or misstatement. These plans are for representation purposes only and no guarantee is given on the total square footage of the property within this plan. The figure icon is for initial guidance only and should not be relied on as a basis of valuation.

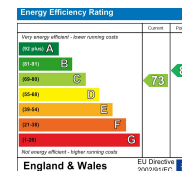


coopers
est 1986

**42 Queen Street, Maidenhead,
SL6 1HZ**

maidenhead@coopersresidential.co.uk

CoopersResidential.co.uk



Important Notice: These particulars, whilst believed to be accurate are set out as a general outline only for guidance and do not constitute any part of an offer or contract. Intending purchasers should not rely on them as statements or representation of fact, but must satisfy themselves by inspection or otherwise has the authority to make or give any representation or warranty in respect of the property.